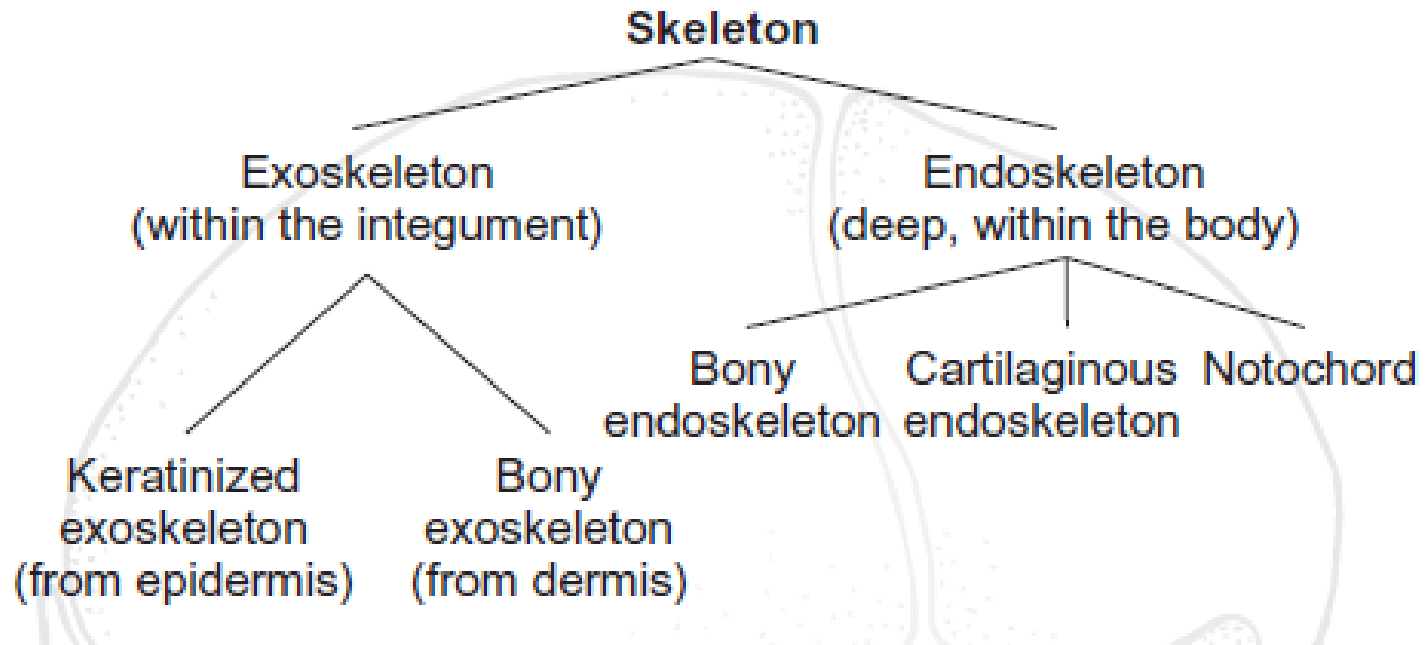
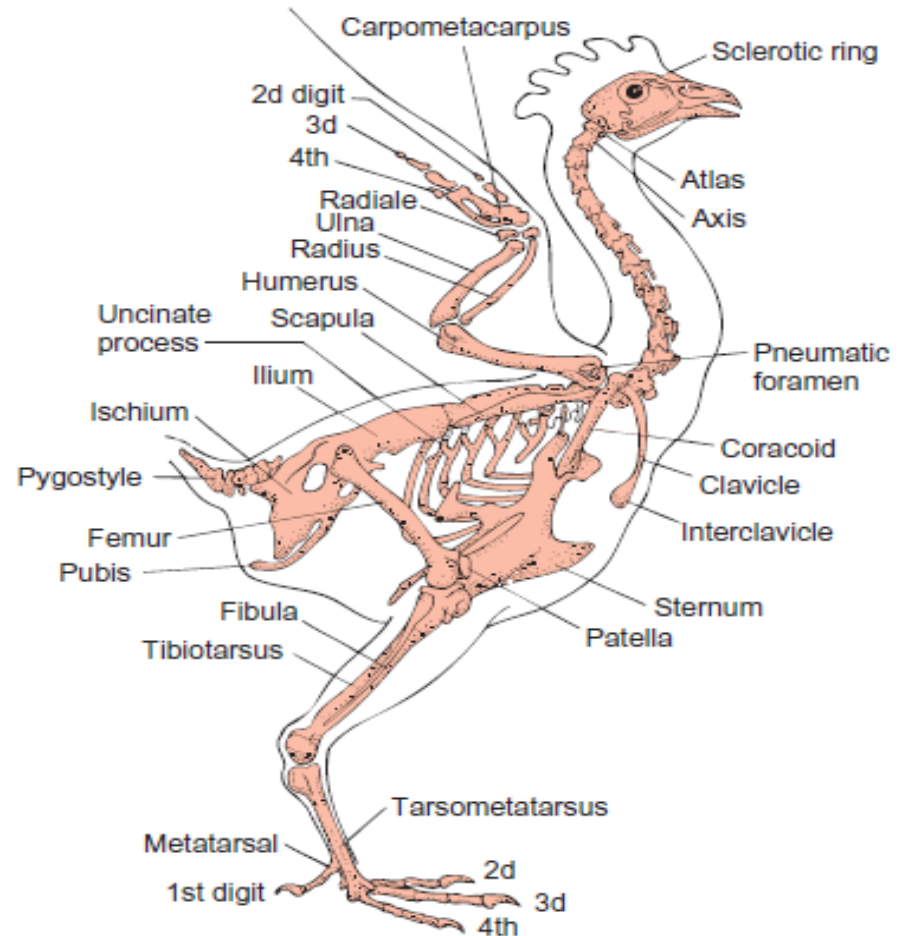
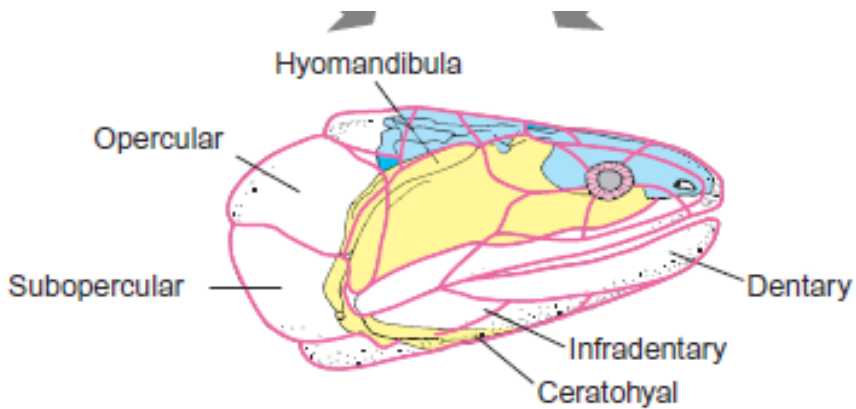
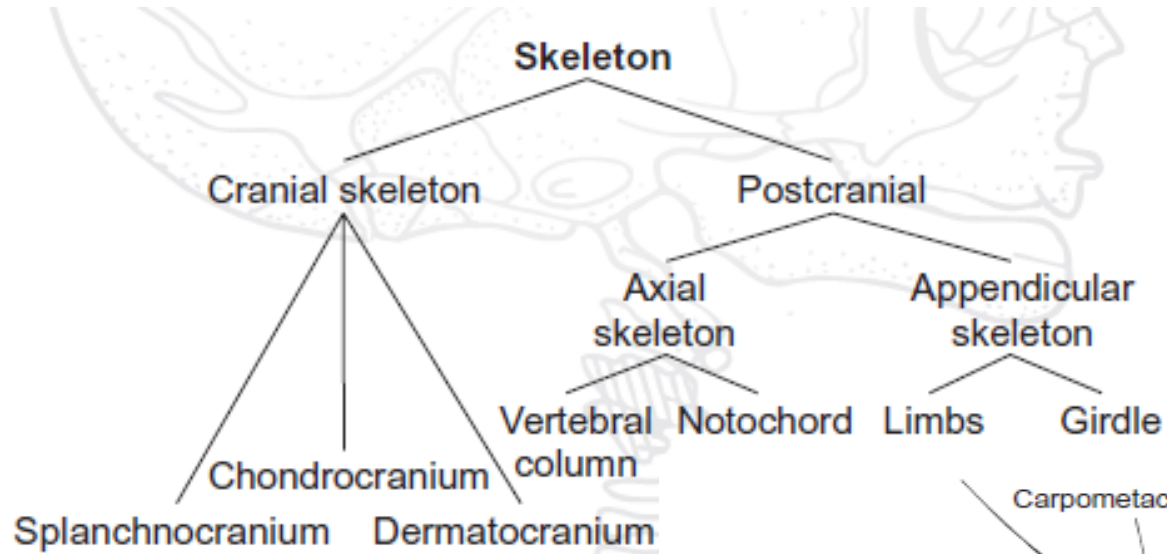
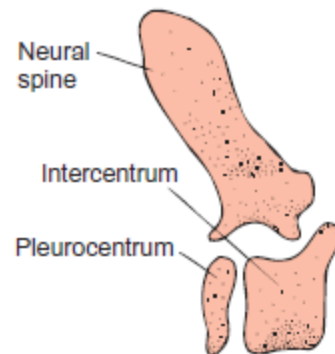
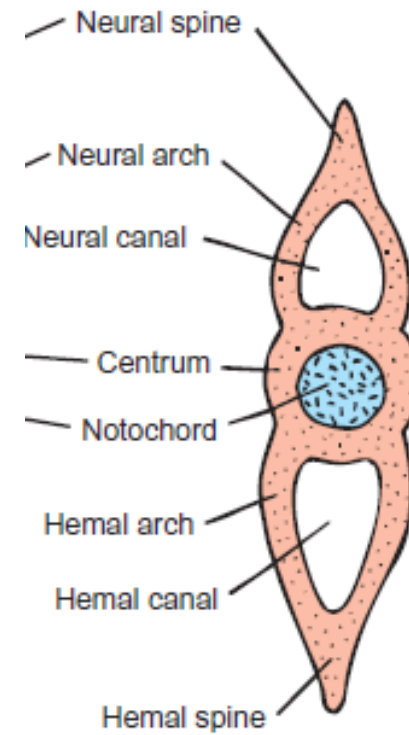
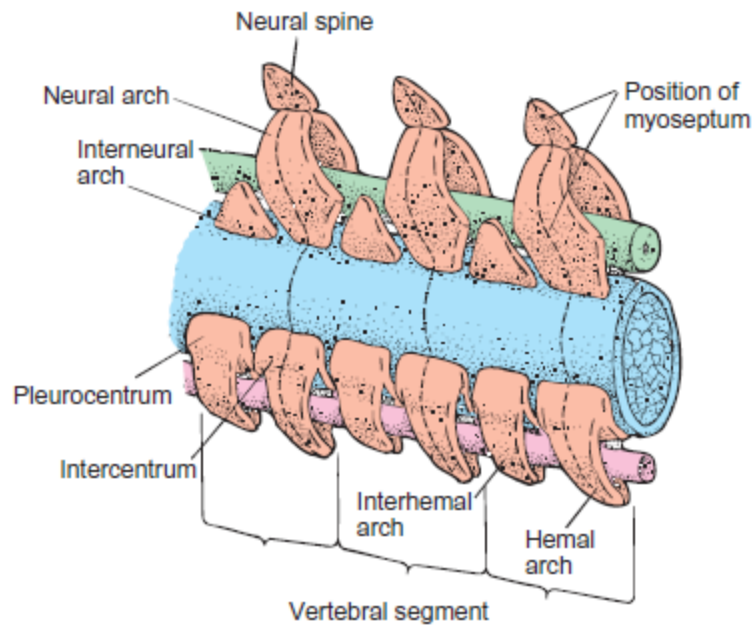


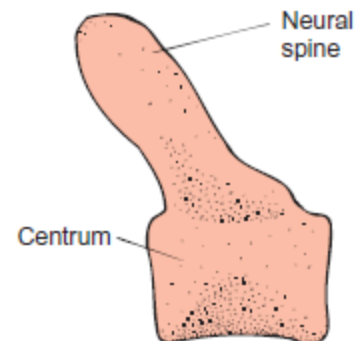
Vertebrate Skeletal System



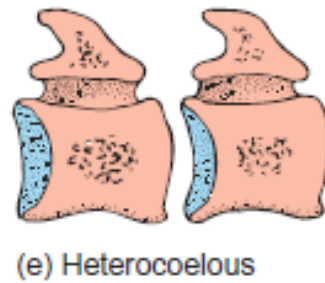
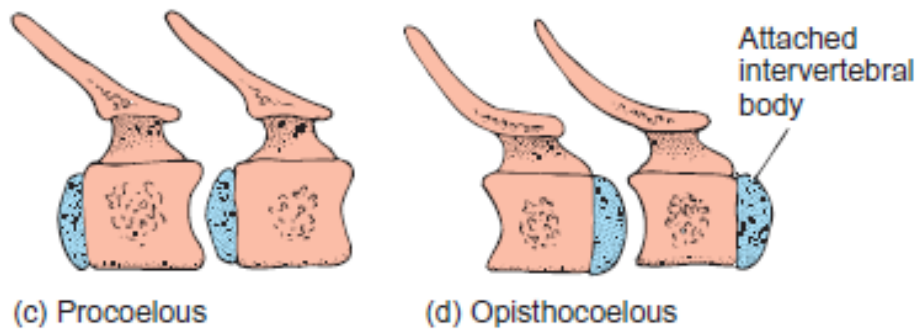
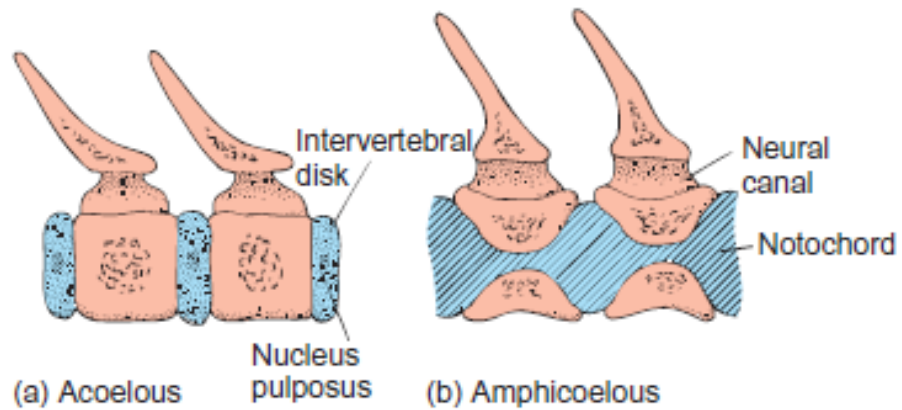




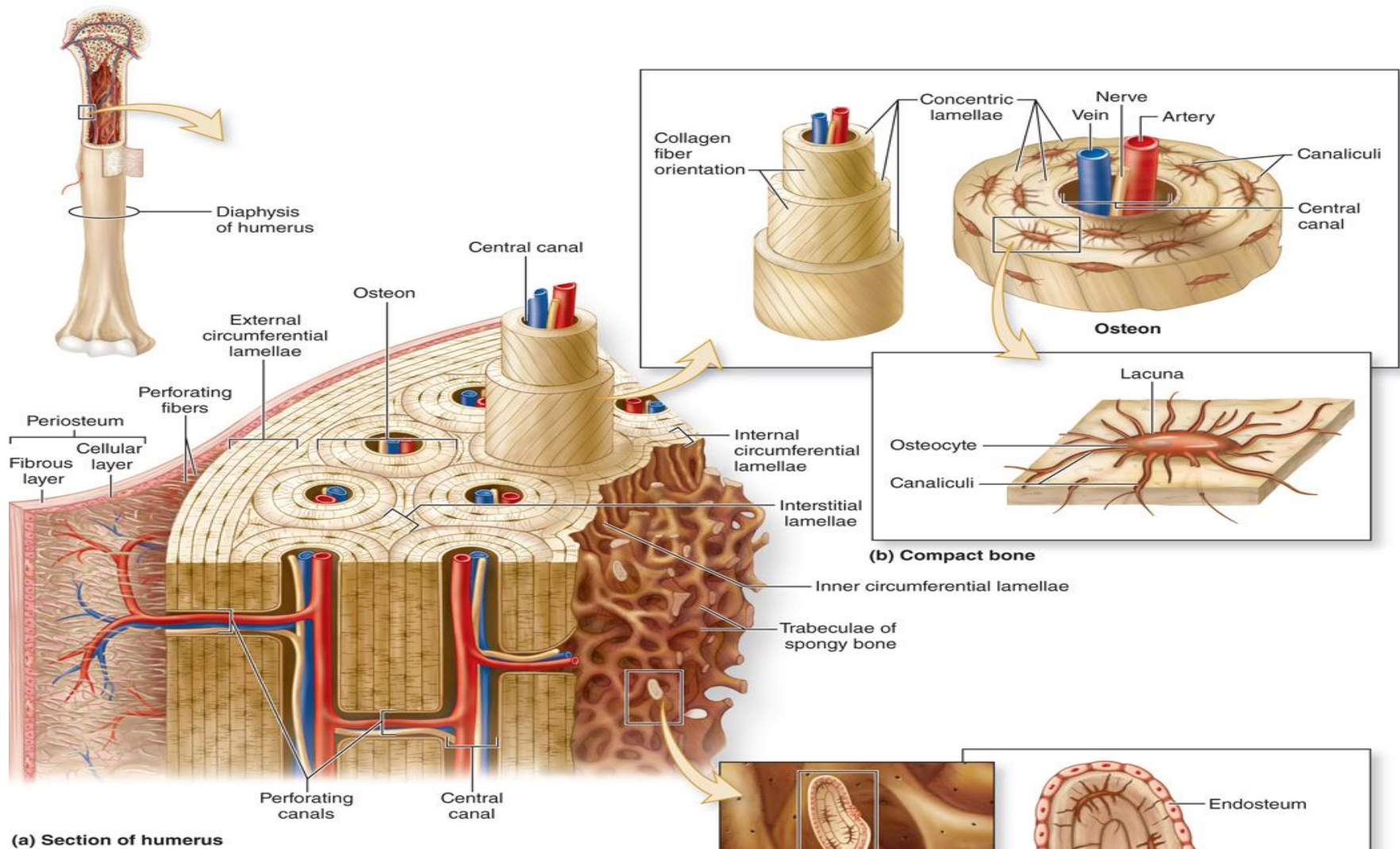
(a) Rhachitomous vertebra
(aspidospondyl)



(b) Lepospondyl vertebra
(holospondyl)

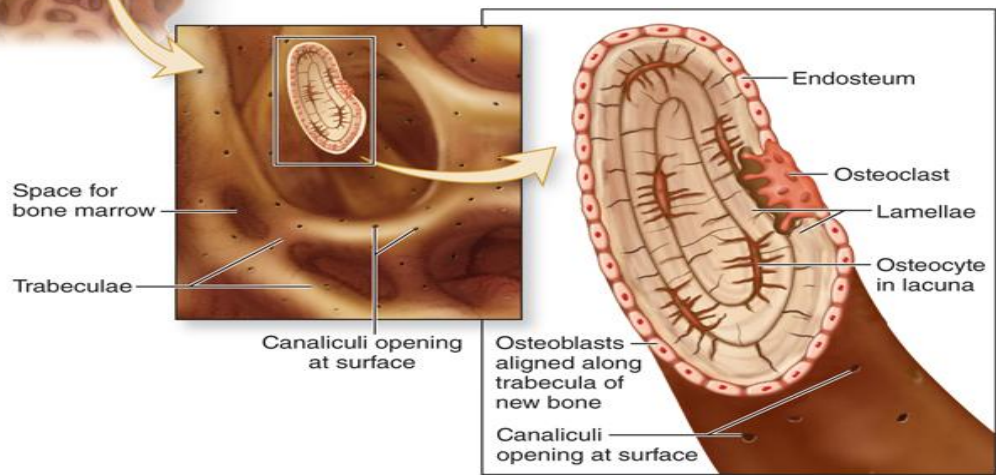


OSSIFICATION



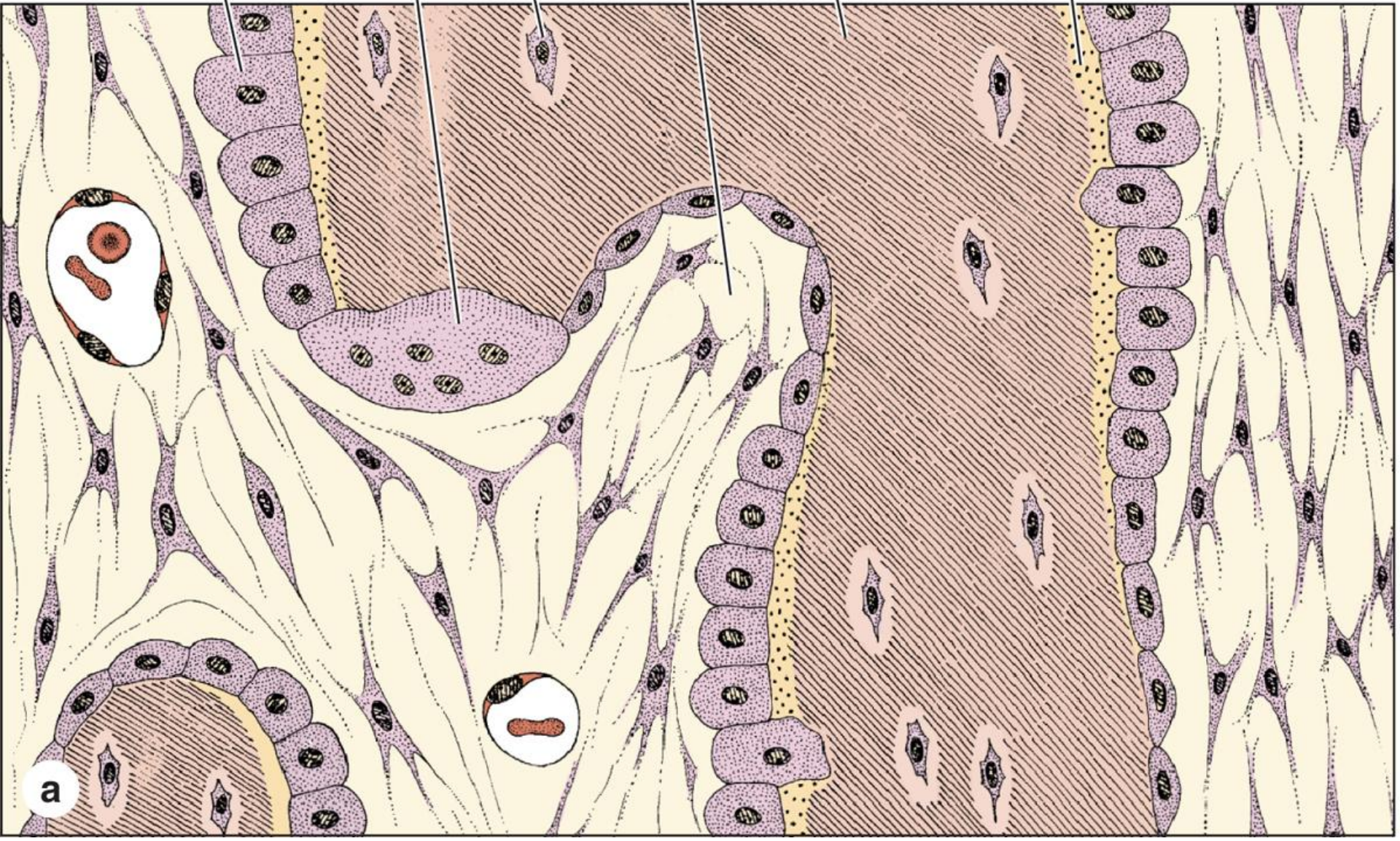
(a) Section of humerus

(b) Compact bone

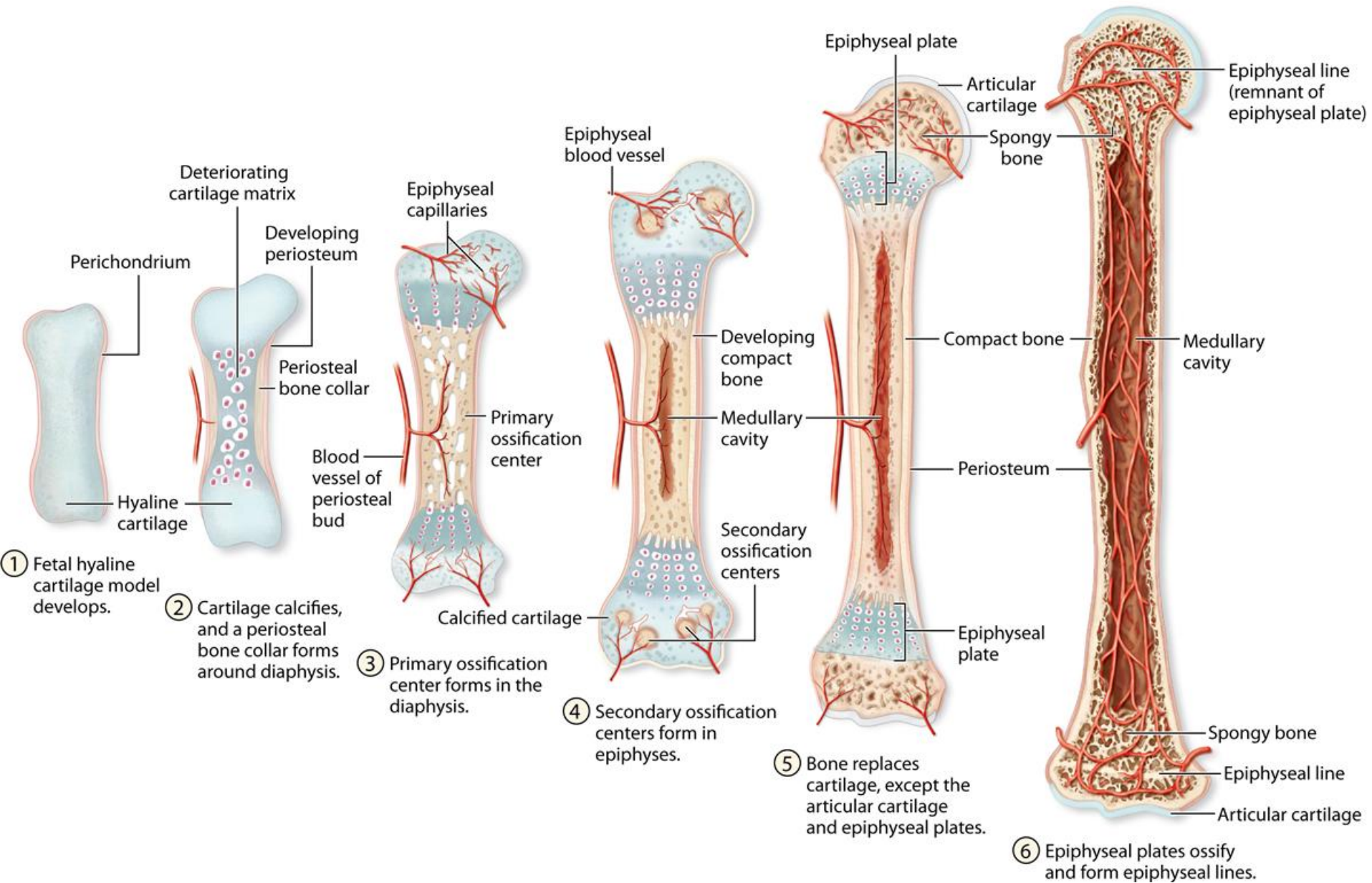


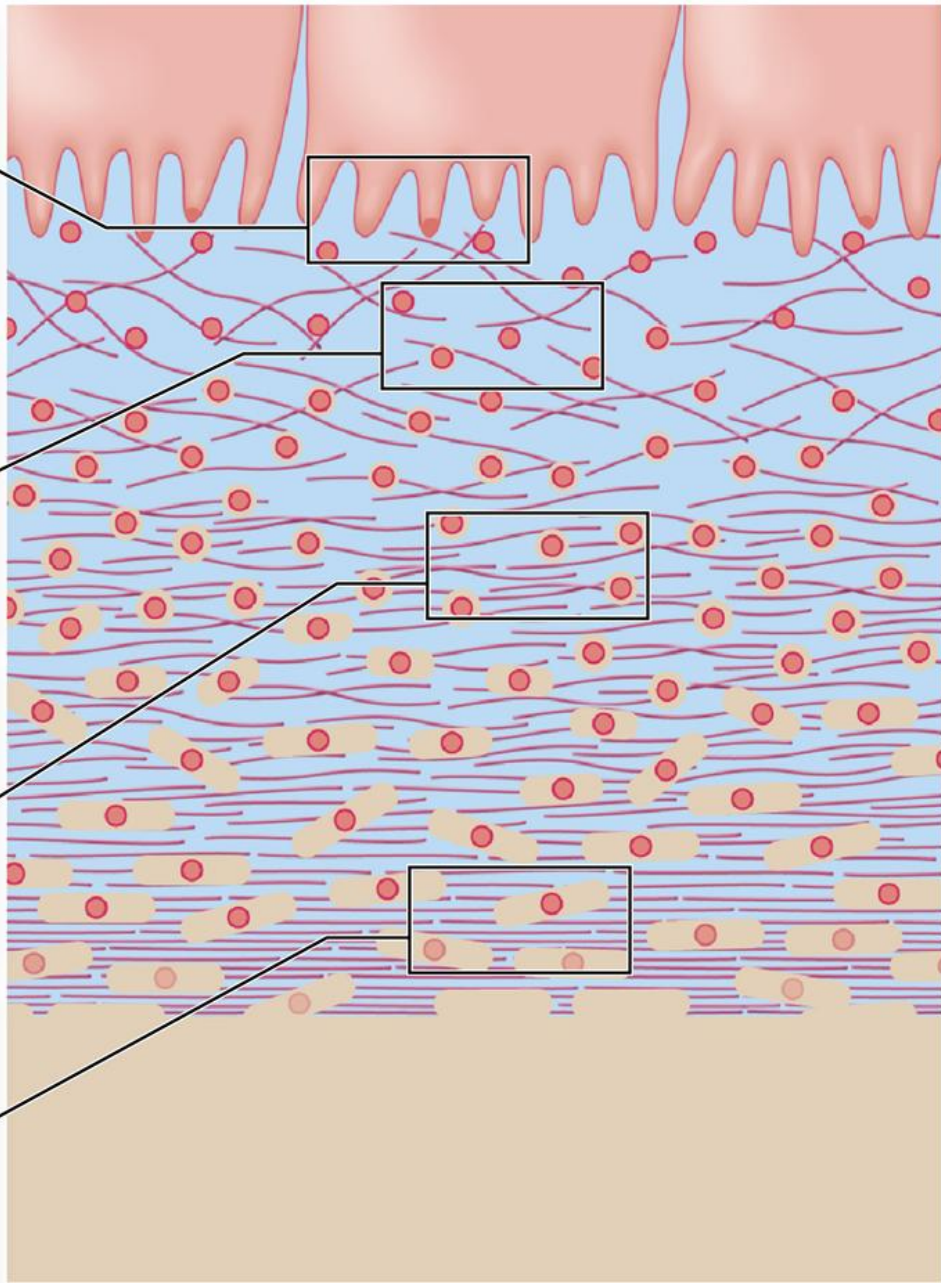
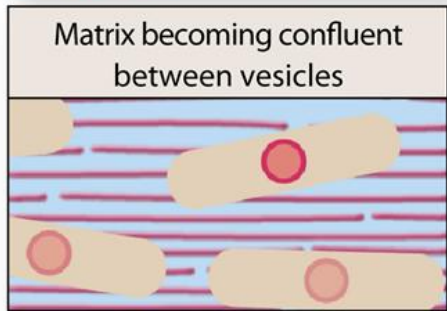
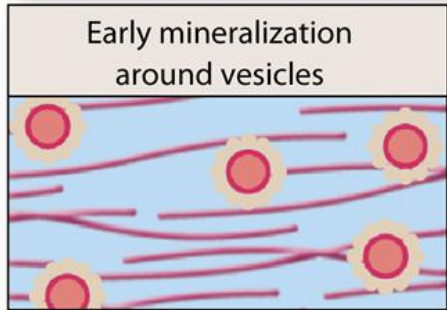
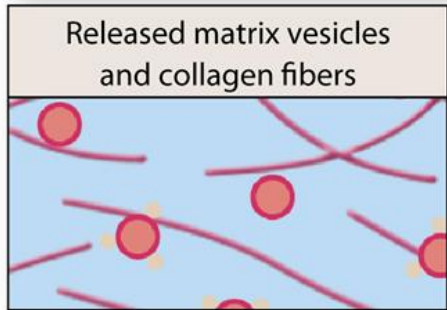
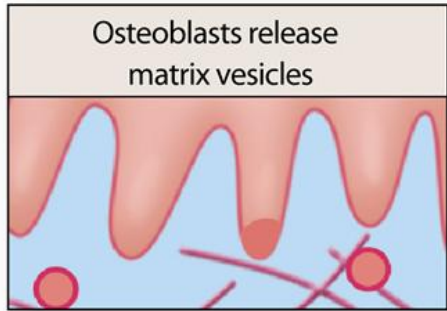
(c) Spongy bone

Osteoblast Osteoclast Mesenchyme Newly formed
Osteocyte Bone matrix matrix (osteoid)



a



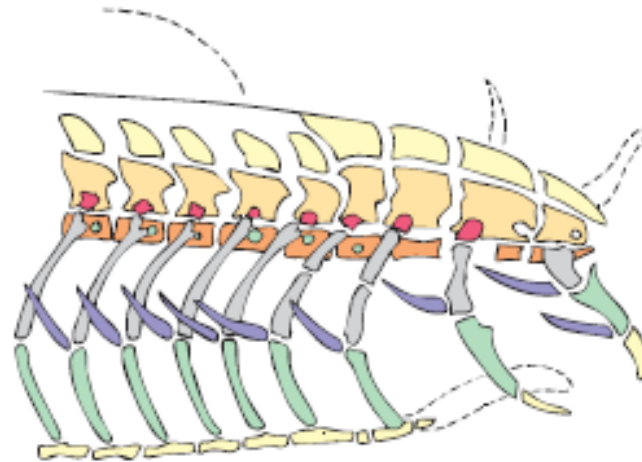


Osteoblasts

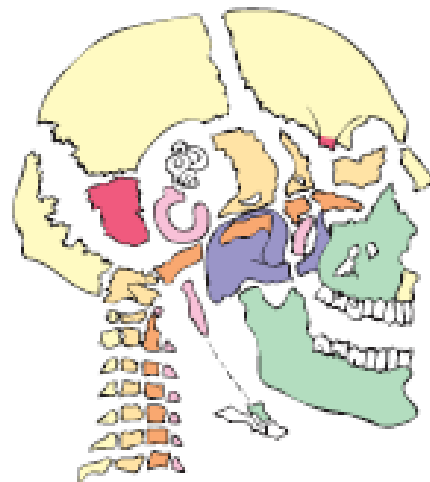
Osteoid layer

Mineralized bone

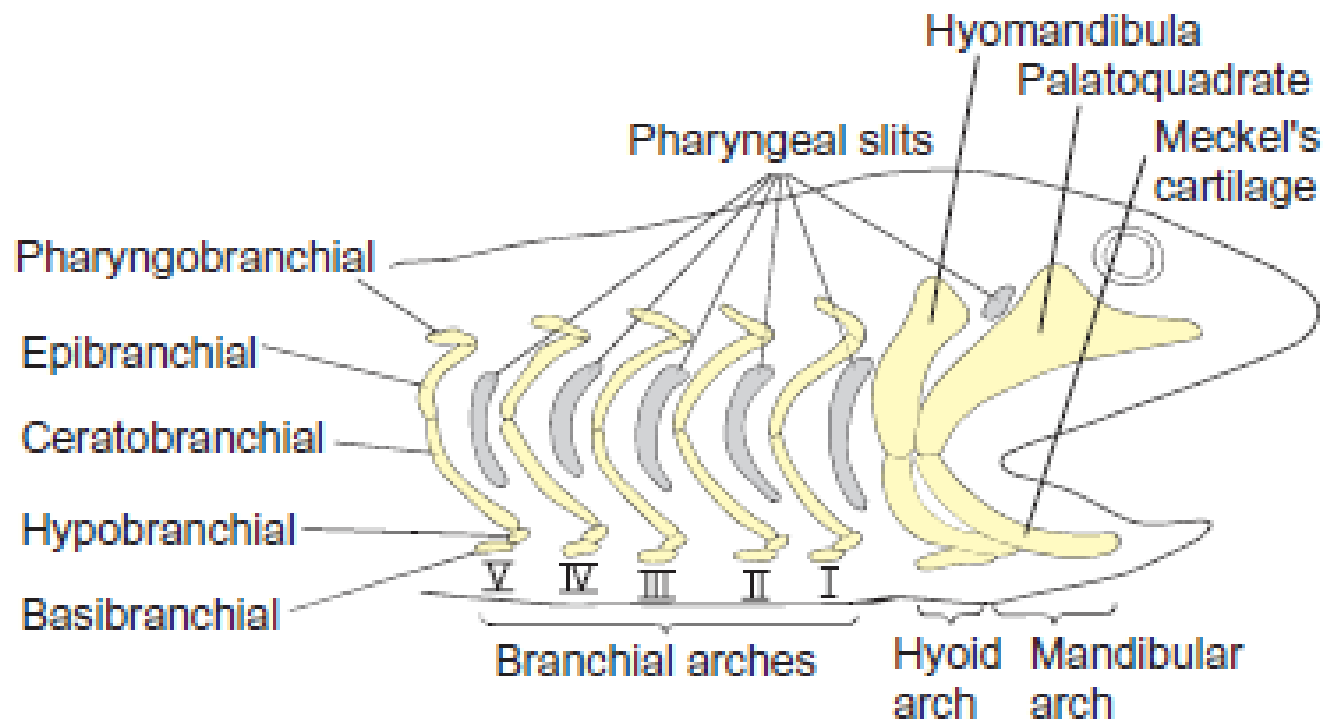
Modification of Visceral Arches

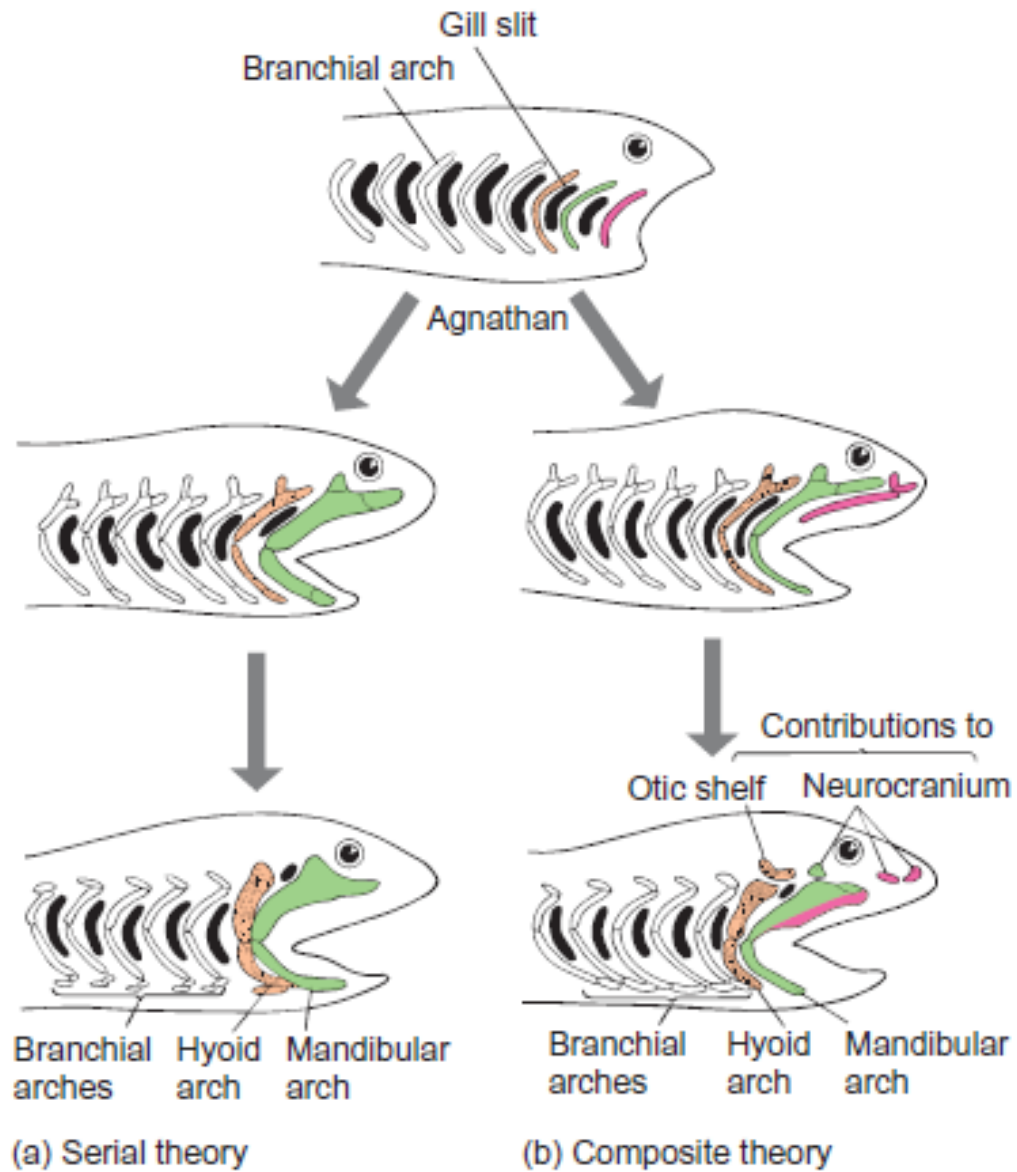


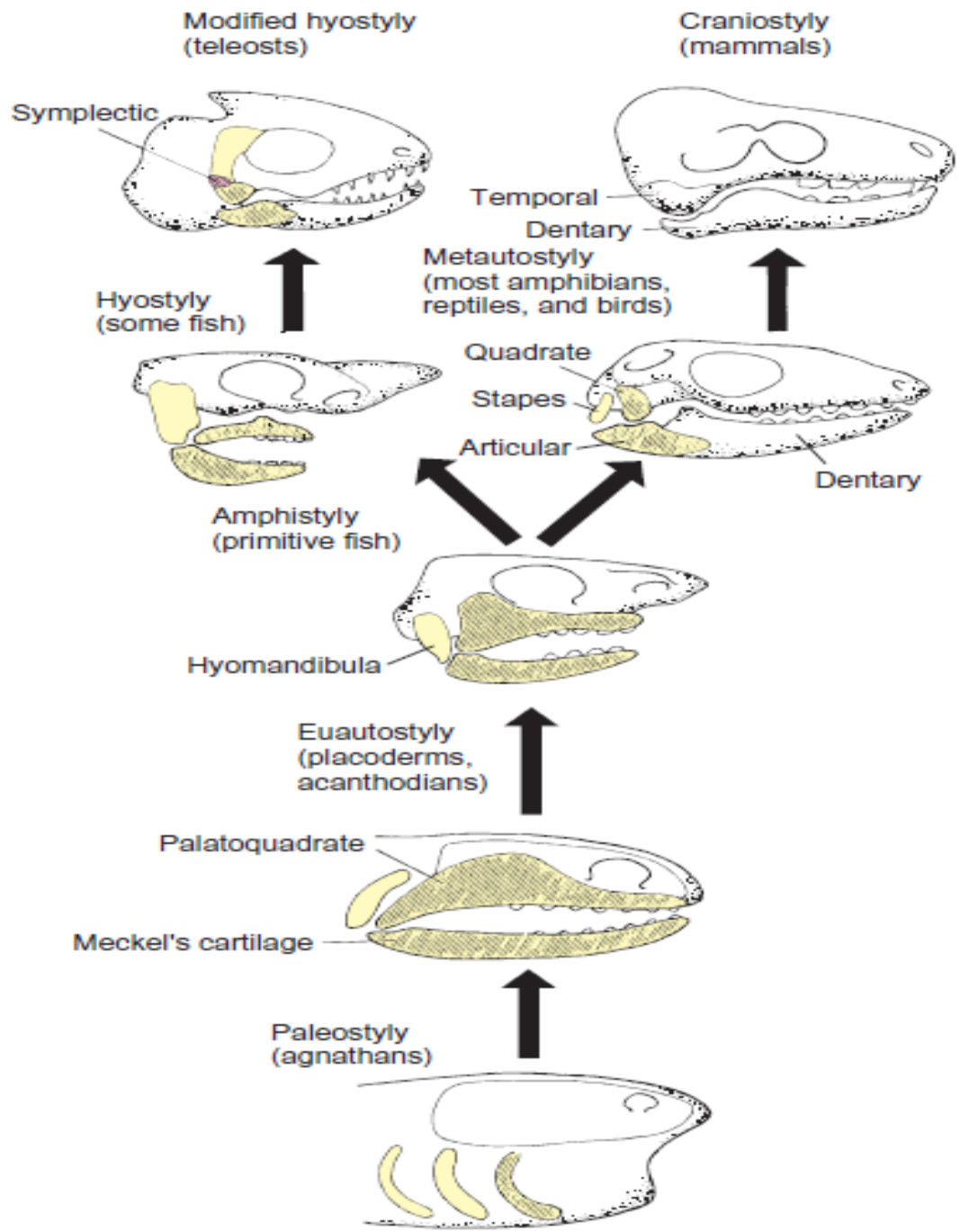
i) Theoretical ancestor



Human







Thank you!
Jimmy

